

SENSORVIEW 2.92mm & 2.4mm connectors are precision connectors for microwave applications up to 40 & 50GHz.

2.92mm is compatible with series SMA and 3.5mm connectors.

The special insulator design is excellent for high frequency connection with good stability.

These connectors provide a high ingress protection level against chemicals, fluids, dust.

Characteristics for 40GHz Connector

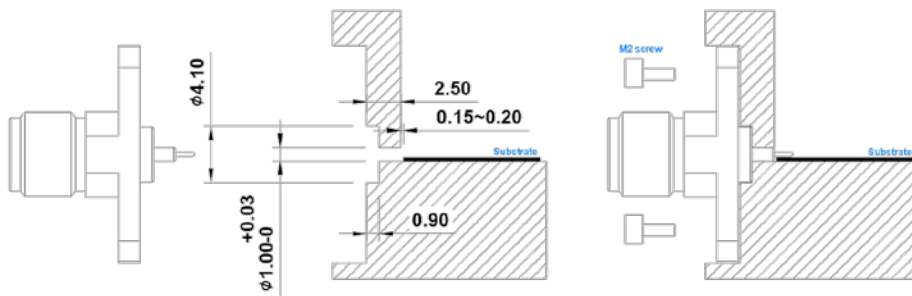
Electrical Characteristics	
Impedance	50 Ω
Frequency range	DC ~ 40GHz
VSWR max.	< 1.32
Insertion Loss	0.03 X √F[GHz]
RF Leakage	-90 dB max
Voltage rating	250 V rms, 50Hz

Environmental Characteristics	
Temperature range	-55°C~125°C
Thermal shock	MIL STD 202, method 107, Condition B
Vibration	MIL STD 202, method 204, Condition D
Corrosion	MIL STD 202, method 101, Condition B
Moisture resistance	MIL STD 202, method 106
Shock	MIL STD 202, method 213, Condition I

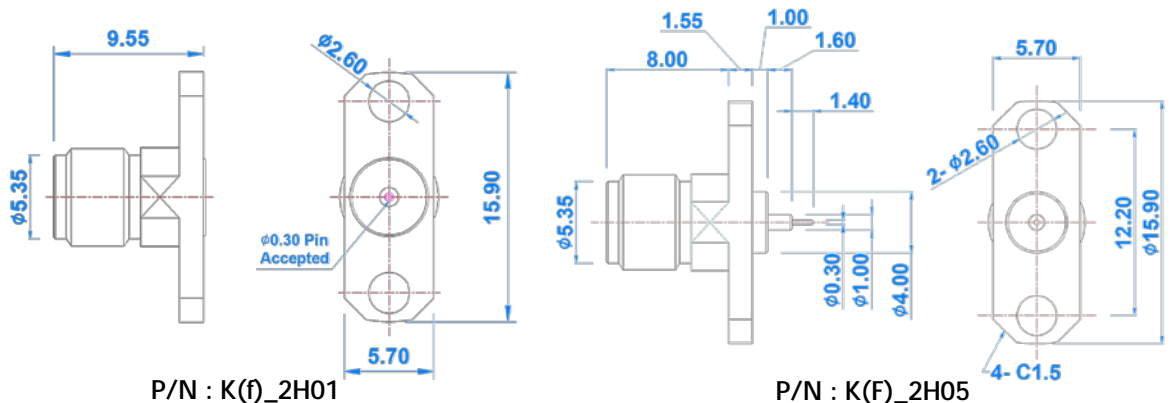
Materials and Plating		
	Material	Plating
Body	Stainless steel	Passivated
Center contact	BeCu	Gold on Nickel
Insulator	ULTEM / PTFE	-

Mechanical Characteristics	
Durability	500 mating
Engage / Disengage	< 23 N · cm
Mating torque	80 ~ 110 N · cm
Contact captivation	22 N

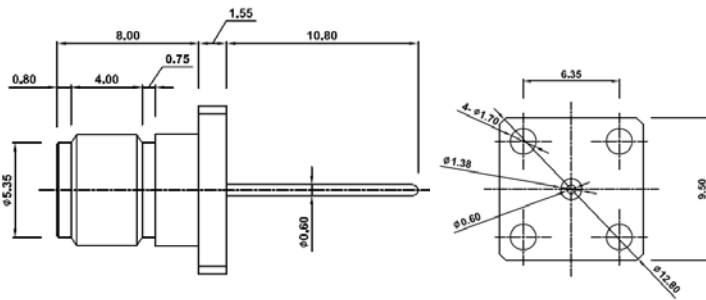
Installation for 40GHz Connector



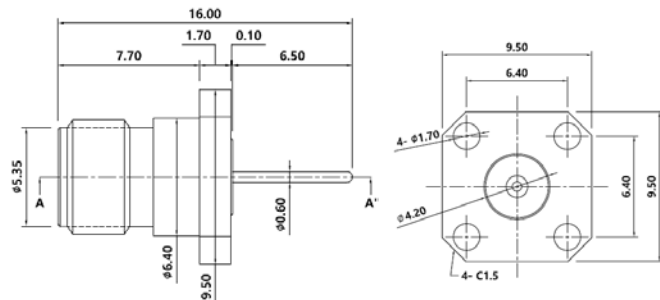
40GHz Connector Drawing



40GHz Connector Drawing



P/N : K(F)_4H01



P/N : K(F)_4H02

Characteristics for 50GHz Connector

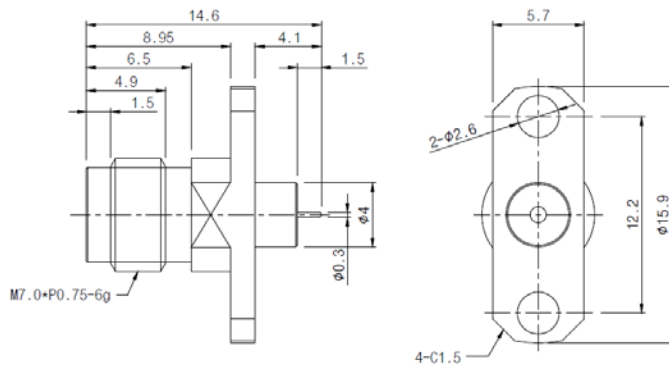
Electrical Characteristics	
Impedance	50 Ω
Frequency range	DC ~ 50GHz
VSWR max.	< 1.20
Insertion Loss	-0.2dB Max
RF Leakage	-90 dB max.
Voltage rating	250 V rms, 50Hz

Environmental Characteristics	
Temperature range	-55°C~125°C
Thermal shock	MIL STD 202, method 107, Condition B
Vibration	MIL STD 202, method 204, Condition D
Corrosion	MIL STD 202, method 101, Condition B
Moisture resistance	MIL STD 202, method 106
Shock	MIL STD 202, method 213, Condition I

Materials and Plating		
	Material	Plating
Body	Stainless steel	Passivated
Center contact	BeCu	Gold on Nickel
Insulator	ULTEM / PTFE	-

Mechanical Characteristics	
Durability	500 mating
Engage / Disengage	< 23 N · cm
Mating torque	80 ~ 110 N · cm
Contact captivation	22 N

50GHz Connector Drawing



P/N : 2P4(F)_2H01